

PRORIL

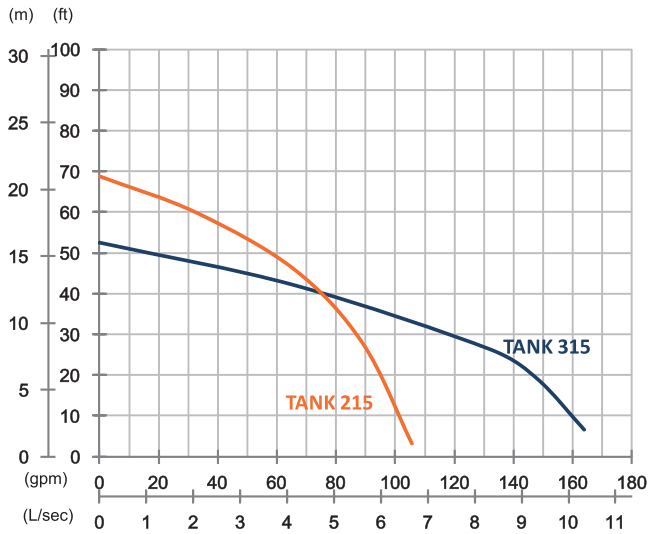
60Hz

Designed for continuous operations, excellent performance and easy maintenance, PRORIL Tank series pumps have proven their reliability and durability in demanding areas like construction, mining, tunneling, quarries, industries and rental applications.

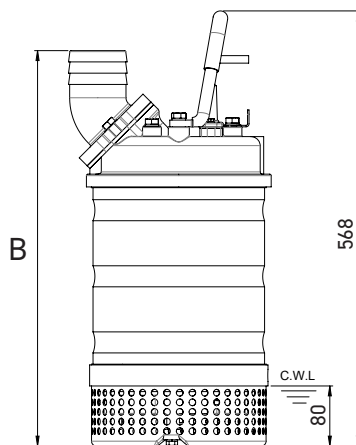
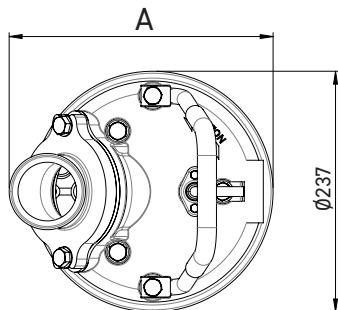
Dewatering Pump **TANK 215/315**

High Chrome Dewatering Pump





	TANK 215	TANK 315
OUTPUT	2 HP (1.5 kW)	2 HP (1.5 kW)
OUTLET	2" (50 mm)	3" (80 mm)
SOLID PASSAGE	0.4" (9 mm)	0.4" (9 mm)
Weight	73 lbs/33 kg	73 lbs/33 kg
HEAD	Rated: 46 ft, 14 m Max: 69 ft, 21 m	Rated: 26 ft, 8 m Max: 52 ft, 16 m
FLOW	Rated: 66 gpm, 4.2 L/s Max: 105 gpm, 6.7 L/s	Rated: 132 gpm, 8.3 L/s Max: 164 gpm, 10.3 L/s



	A	B
TANK 215	253	537
TANK 315	266	526

unit : mm
C.W.L. : Continuous running water level

Pump Type	Electric Submersible Pumps	
Motor	Phase	1-Phase, 3-Phase
	Type	Induction Motor
	Poles	2 Pole (3450 rpm)
	Insulation	Class F
	Protector	Circle Thermal Protector
	Starter	1-Phase · Capacitor-Run, 3-Phase · D.O.L.
Lubricant	Food Grade (ISO VG32)	
Specs.	Impeller Type	Opened
	Shaft Seal	Double Mechanical Seal
		Silicon Carbide VS Ceramic/Carbon
	Bearings	C3 Shielded ball bearings
	Cable	CSA-Certified PVC Jacketed Cables 33 ft (10 m) or longer upon request
Materials	Pump Casing	Gray Iron
	Impeller	Chromium Iron
	Motor Frame	Stainless Steel
	Motor Shaft	Stainless Steel
	Strainer	Stainless Steel
Max. Liquid Temperature	40°C (104°F)	
Max. Submersion Depth	20 m (66 ft)	
pH Range	pH 5 - pH 8	